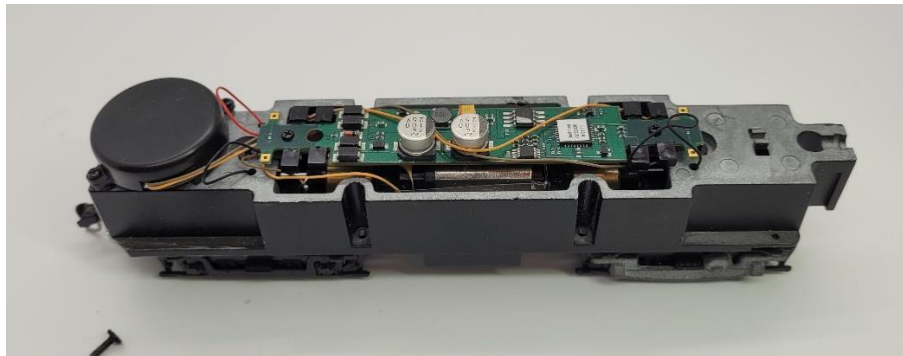


San Juan Pacific Locomotive Works On30 31' McKeen Railcar

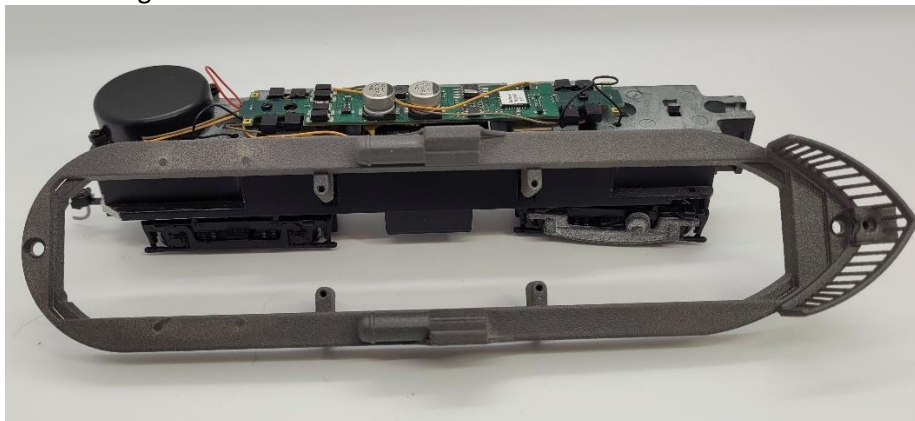
The shell and chassis adaptor are based around the Bachmann HO FB-2 (the FA-2 would probably work also). The Bachmann FB-2 chassis needs some mild modification to fit the shell adaptor:

- Remove or trim the plastic coupler mounting adaptor on what will become the front of the railcar.
- Trim down the corners on the metal end of the Bachmann chassis.
- Sand and file the Bachmann chassis and McKeen chassis adaptor to fit. It is a snug fit since there isn't a lot of extra clearance in the corners of the chassis adaptor.
- I tapped the holes for the Bachmann chassis mounting screws using an 0-80 tap. I know that isn't the right size, but I had it and I can't find what the actual thread in the Bachmann screws.
- The mounting holes in the body shell need to be tapped for 2-56 screws. You may not need all 6 holes, but it may help to keep everything even.
- The front truck side frames are designed to overlay the donor truck side frames. Remove axle bearing and rivet detail from the side frames so the overlays sit flat and glue them to the truck side frames.
- The front coupler is mounted with a Kadee 2-56 nylon screw that is trimmed to fit. The stock Bachmann or other 'whisker' will work.
- The rear coupler is an extended shank Kadee.
- The Bachmann decoder doesn't have the headlight terminals marked, but they are the front two terminals on the decoder. The positive terminal is on the right.

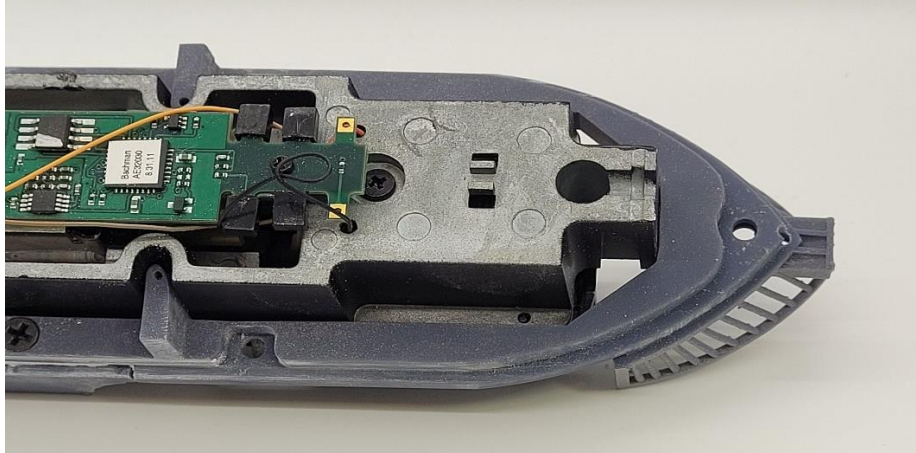
Bachmann chassis with corners removed:



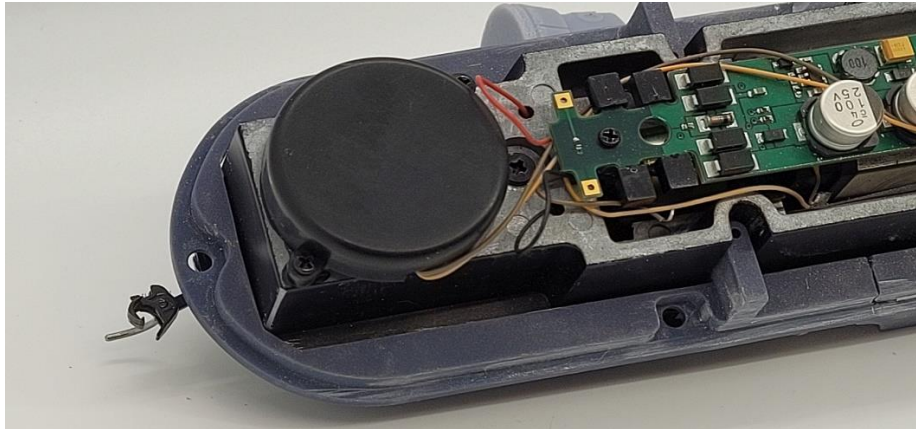
Chassis adaptor mounting holes:



Chassis fit front:



Chassis fit rear:



Headlight terminals:

